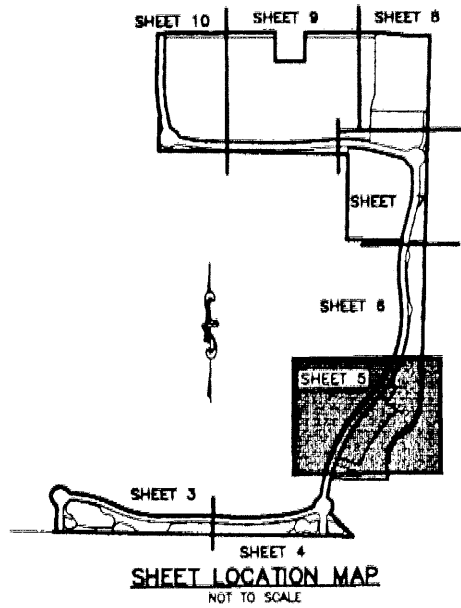


MIRASOL PLAT ONE

PART OF GOLF DIGEST P.C.D.
 SITUATE IN SECTIONS 33 AND 34, TOWNSHIP 41 SOUTH, RANGE 42 EAST,
 AND SECTIONS 3 AND 4, TOWNSHIP 42 SOUTH, RANGE 42 EAST,
 CITY OF PALM BEACH GARDENS,
 PALM BEACH COUNTY, FLORIDA
 MARCH, 2000 SHEET 5 OF 10



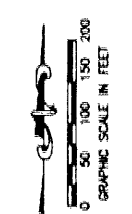
18

STATE OF FLORIDA
 COUNTY OF PALM BEACH

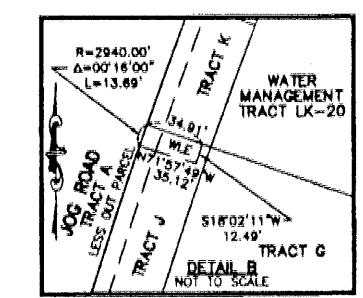
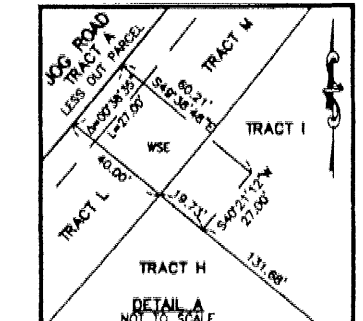
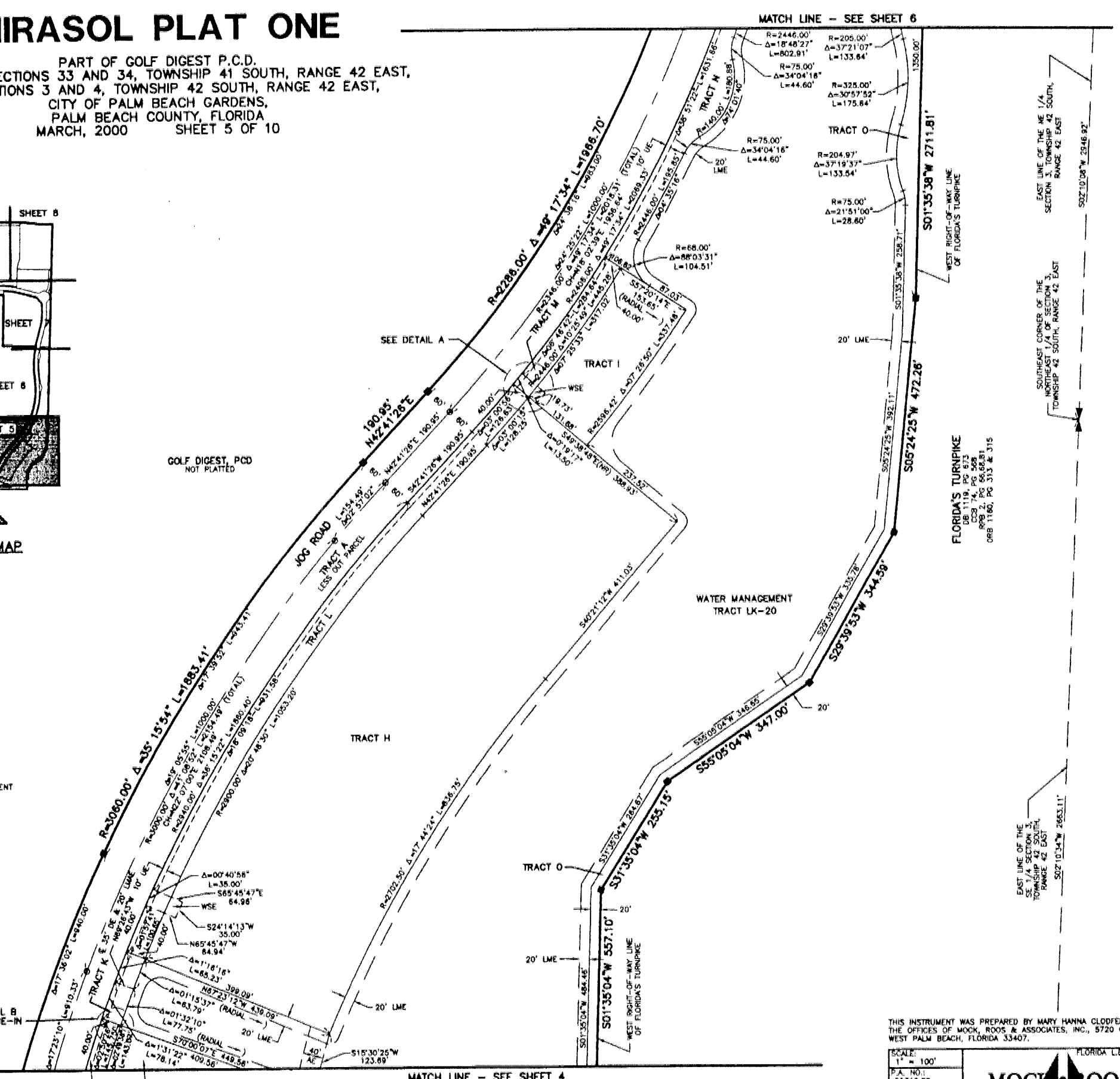
THIS PLAT WAS FILED FOR
 RECORD _____ DAY OF _____
 AD, 2000 AND DULY RECORDED
 IN PLAT BOOK _____ ON PAGES
 _____ AND _____

DOROTHY H. WILKEN, CLERK
 BY: _____, D.C.

CIRCUIT COURT SEAL



- LEGEND**
- L ARC LENGTH
 - AE ACCESS EASEMENT
 - BE BUFFER EASEMENT
 - A CENTRAL (DELTA) ANGLE
 - CCB CIRCUIT COURT BOOK
 - CH CHORD
 - (C) CALCULATED
 - (D) DEED
 - DB DEED BOOK
 - DE DRAINAGE EASEMENT
 - ESMT EASEMENT
 - FPL FLORIDA POWER AND LIGHT
 - IEE IMPROVEMENT EASEMENT
 - LAE LIMITED ACCESS EASEMENT
 - LME LAKE MAINTENANCE EASEMENT
 - LMAE LAKE MAINTENANCE ACCESS EASEMENT
 - LSE LIFT STATION EASEMENT
 - (NR) NON-RADIAL
 - NO NUMBER
 - PCD PLANNED COMMUNITY DEVELOPMENT
 - ORB OFFICIAL RECORD BOOK
 - PB PLAT BOOK
 - PG(S) PAGE(S)
 - R RADIUS
 - RPB ROAD PLAT BOOK
 - SLE SEWER LINE EASEMENT
 - SUA SEACOAST UTILITY AUTHORITY
 - (TYP) TYPICAL
 - UE UTILITY EASEMENT
 - WLE WATER LINE EASEMENT
 - WSE WATER AND SEWER EASEMENT
 - PERM PERMANENT REFERENCE MONUMENT
 - SET LB-04B PERMANENT CONTROL POINT
 - SET LB-04B CENTERLINE



THIS INSTRUMENT WAS PREPARED BY MARY HANNA GLODFELTER, P.S.M. IN THE OFFICES OF MOCK, ROOS & ASSOCIATES, INC., 5720 CORPORATE WAY, WEST PALM BEACH, FLORIDA 33407.

SCALE: 1" = 100'

P.A. NO.: 99310.00

DATE: MARCH, 2000

DRAWING NO.: 41-42-33-18

FLORIDA L.B. NO. 48

MOCK ROOS
 ENGINEERS ARCHITECTS PLANNERS

5720 Corporate Way, West Palm Beach, Florida 33407
 (561) 663-3113, fax 478-7246

SHEET 5 OF 10

MIRASOL PLAT ONE
 PART OF GOLF DIGEST P.C.D.
 SITUATE IN SECTIONS 33 AND 34,
 TOWNSHIP 41 SOUTH, RANGE 42 EAST,
 AND SECTIONS 3 AND 4,
 TOWNSHIP 42 SOUTH, RANGE 42 EAST,
 CITY OF PALM BEACH GARDENS,
 PALM BEACH COUNTY, FLORIDA